



About Dr. Levy

- ✓ B.Sc. in Aerospace Engineering (1994)
- ✓ Master in Business Admin w/MIS Concentration (1998)
- ✓ Ph.D. in MIS (2003)

Professor of Information Systems and Cybersecurity
 Director, Center for e-Learning Security Research
 E-mail: levyy@nova.edu
 Site: <http://cec.nova.edu/~levyy/>

5

About Mrs. Carlton

- ✓ B.A. in Business Administration (1990)
- ✓ Master in Business Administration (1998)
- ✓ B.Sc. in Computer Science (2000)
- ✓ M.Sc. in Information Studies (2004)
 - network and security concentration
- ✓ Ph.D. in Information Systems and Cybersecurity (work in progress)

Doctoral Candidate, Levy CyLAB
<http://cec.nova.edu/~levyy/DrLevysCyLab.htm>

E-mail: mc2418@nova.edu

6

National Center of Academic Excellence in Information Assurance/Cyber Defense
 Nova Southeastern University is one of Florida's leading research institutions in cybersecurity

<http://infosec.nova.edu/>

Nova Southeastern University is one of Florida's leading research institutions in cybersecurity

Having met the criteria for measuring the depth and maturity of established programs in the field of Information Assurance/Cybersecurity
Nova Southeastern University
 is hereby designated as a
National Center of Academic Excellence
 in
Information Assurance/Cybersecurity Education
 for Academic Years 2014-2021

This certificate is presented in the recognition of significant contributions in meeting the national demand for information assurance/cybersecurity education, developing a growing number of professionals with information assurance and cybersecurity expertise in various disciplines, and ultimately contributing to the protection of the national information infrastructure.

<http://infosec.nova.edu/>



C3 = *Cyber-security*
+ *Cyber-safety*
+ *Cyber-ethics*

C3 Defined

- *Cyber-Security*
"The protection of information and computer systems, as well as networks while connected to the Internet"
- *Cyber-Safety*
"Responsible rules and behaviors designed to keep individuals safe whenever connected to the Internet"
- *Cyber-Ethics*
"Cyber-Ethics involve the informal code of positive conduct used whenever someone is connected to the Internet"

Common Cyber Threats

- Identity Theft
- Data Privacy
- Social Engineering
- Phishing and Spear-Phishing
- Business E-mail Compromise
- Free/Open WiFi Networks
- Malware and Spyware
- Mobile Malware
- Social Media

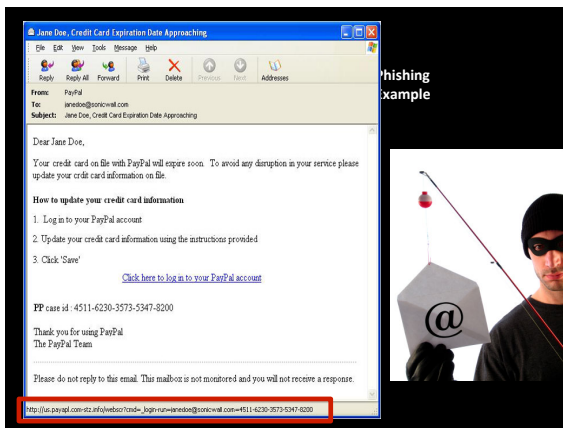






Data Privacy

Many people would share personal information with companies or others as long as they get something in return (free app!)



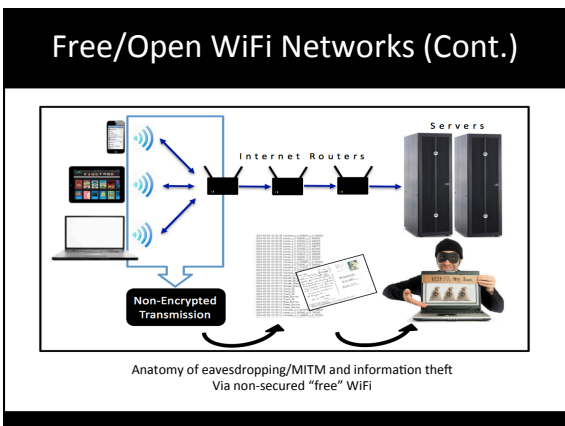
Spear Phishing

How do you become a target of Spear Phishing attack?

- Using your Web presence against you
 - Not keep your secrets ... *secret*
 - Weak passwords
 - Not patching, updating, and using security/ encrypted software
- So... Be Smart!







Mobile Malware/Spyware



```

2014-02-06 07:03:26 release_x_0.629647_y_0.644302
2014-02-06 07:03:26 press_x_0.629647_y_0.644302
2014-02-06 07:03:26 press_x_0.627040_y_0.646303
2014-02-06 07:03:26 press_x_0.626972_y_0.646503
2014-02-06 07:03:26 press_x_0.620712_y_0.648773
2014-02-06 07:03:26 press_x_0.615308_y_0.651443
2014-02-06 07:03:24 press_x_0.611776_y_0.655014
2014-02-06 07:03:24 press_x_0.609418_y_0.658505
2014-02-06 07:03:24 press_x_0.602241_y_0.662140
2014-02-06 07:03:23 press_x_0.596811_y_0.673737
2014-02-06 07:03:23 release_x_0.522805_y_0.591690
2014-02-06 07:03:21 press_x_0.520991_y_0.589609
2014-02-06 07:03:20 release_x_0.719131_y_0.346179
2014-02-06 07:03:20 press_x_0.719131_y_0.326624
2014-02-06 07:03:20 release_x_0.439204_y_0.625981
2014-02-06 07:03:20 press_x_0.431148_y_0.519455
2014-02-06 07:03:19 Volume_Up_Button
2014-02-06 07:03:19 Volume_Up_Button
2014-02-06 07:03:17 Volume_Down_Button
2014-02-06 07:03:17 Volume_Down_Button
2014-02-06 07:03:16 Touch_ID
2014-02-06 07:03:16 Touch_ID
2014-02-06 07:03:14 Touch_ID
2014-02-06 07:03:14 Home_Button
2014-02-06 07:03:14 Touch_ID
2014-02-06 07:03:14 Touch_ID
2014-02-06 07:03:13 Home_Button
2014-02-06 07:03:12 Power_Button
2014-02-06 07:03:11 Power_Button
2014-02-06 07:03:10 release_x_0.497974_y_0.798599
2014-02-06 07:03:10 press_x_0.425446_y_0.792843
2014-02-06 07:03:10 release_x_0.344462_y_0.769345
    
```

Malware – ‘Ransomware’

Ransomware is a type of malicious software (malware) that infects a computer and restricts access to it until a ransom is paid to unlock it.



Malware– ‘Ransomware’ – (Cont.)

YOUR COMPUTER HAS BEEN LOCKED!

This operating system is locked due to the violation of the federal laws of the United States of America (Article 1, Section 8, Clause 8; Article 202; Article 210 of the Criminal Code of U.S.A. provides for a deprivation of liberty for four to twelve years.)

Following violations were detected:
 Your IP address was used to visit websites containing pornography, child pornography, zoophilia and child abuse. Your computer also contains video files with pornographic content, elements of violence and child pornography! Spam-messages with terrorist motives were also sent from your computer.
 This computer lock is aimed to stop your illegal activity.

To unlock the computer you are obliged to pay a fine of \$200.

You have **72 hours** to pay the fine, otherwise you will be arrested.

You must pay the fine through

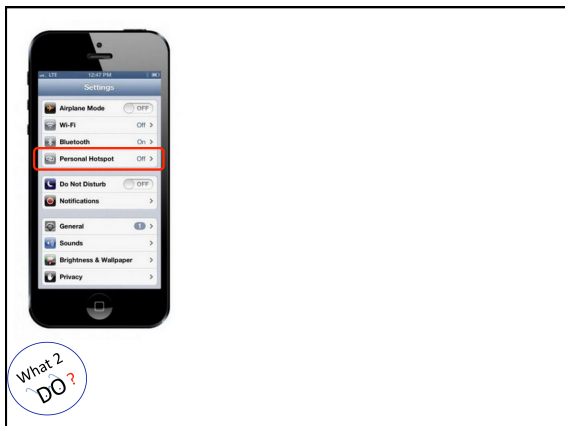
To pay the fine, you should enter the digits resulting code, which is located on the back of your in the payment form and press OK (if you have several codes, enter them one after the other and press OK).

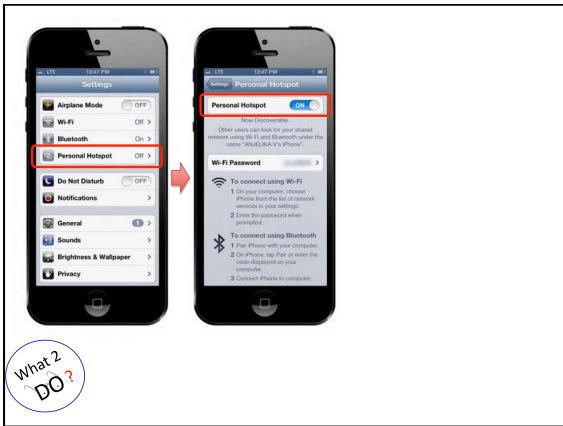


Malware- 'Ransomware' - (Cont.)











Password Strength & Cyber Risks

Use **symbols mixed with letters and numbers**

i → !
 a → @
 S → \$
 P → #
 H → ^

WORST PASSWORDS OF 2013

rank	password	changed from 2012
#01	123456	10.1
#02	password	9.7
#03	12345678	9.6
#04	qwerty	8.1
#05	abc123	6.1
#06	123456789	6.0
#07	111111	5.2
#08	1234567	5.1
#09	iloveyou	4.2
#10	adobe123	4.0

Legend: not changed changed


What 2 DO?

Password Strength & Cyber Risks


- Don't use *passwords*
~~"John\$1953"~~

Use **passphrases!**

"JohnL!kes2Lattes4\$4"



What 2 DO?



**DAY OF
CYBER**
AN INTERACTIVE EXPERIENCE SPONSORED BY NSA

Address: <https://prod.lifejourney.us>

Student Registration Key: uzmn7z

Thank you for attending!

Questions?
Discussion



Our Shared Responsibility
staysafeonline.org

National Cyber Security Awareness Month

STOP | THINK | CONNECT
